



# RELAY BOARD MANAGER

## REFERENCE

### Welcome

Welcome to use “Relay Board Manager”.

The software is produced by ICStation in 2014.

### Environment

Operating system support:

Windows 7, Windows 7 Service Pack 1, Windows Server 2003 Service Pack 2,  
Windows Server 2008, Windows Server 2008 R2, Windows Server 2008 R2 SP1,  
Windows Vista Service Pack 1, Windows XP Service Pack 3

Hardware requirements:

Suggest the minimum requirements:

Pentium 1 GHz or faster, 512 MB RAM or greater

Minimum disk space:

x86 - 850 MB

x64 - 2 GB

### Function

Software is used to control relay module.

Applicable models are as follows:

ICSE012A , ICSE013A , ICSE014A

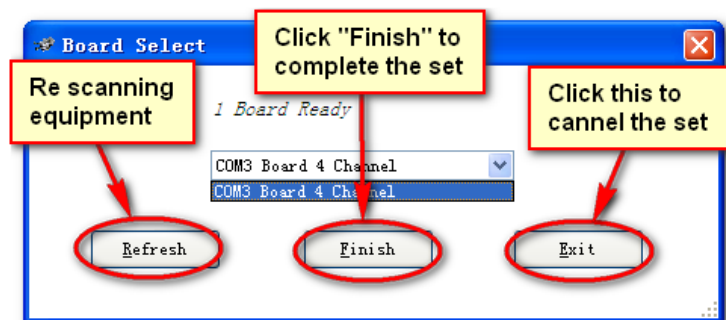
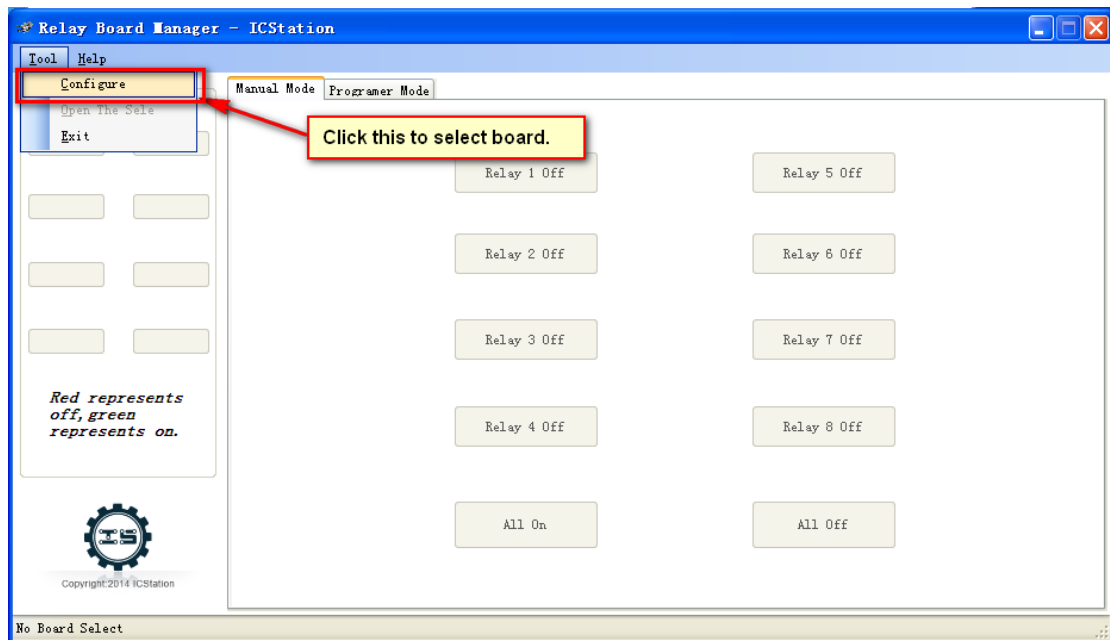


## Usage method

1. Open the software "Relay Board manager"
2. Select board.



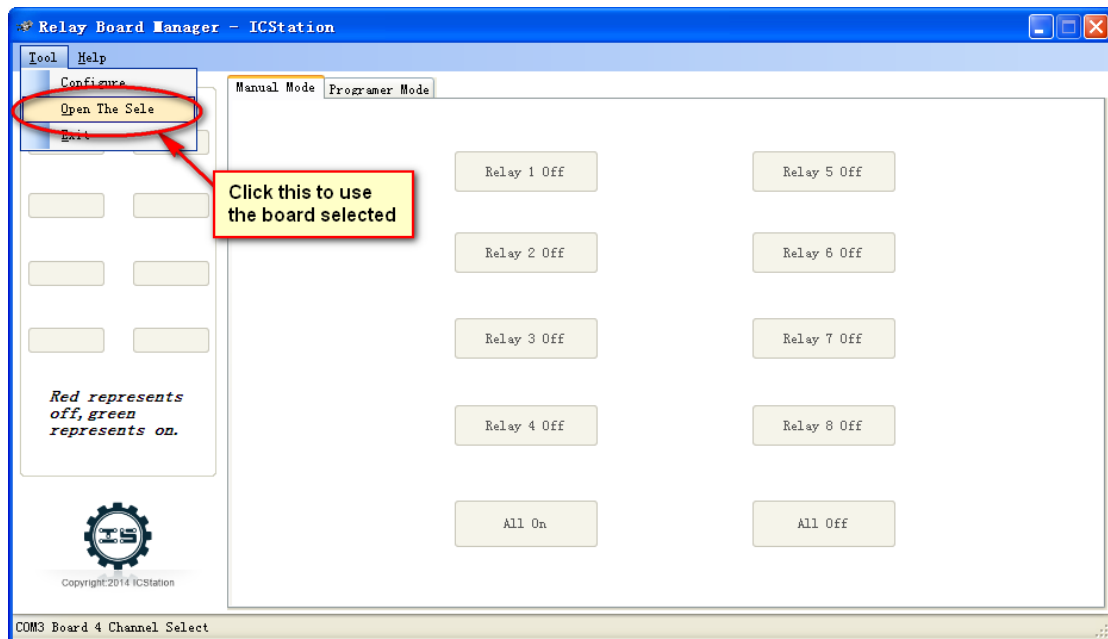
RelayBoardManager.exe



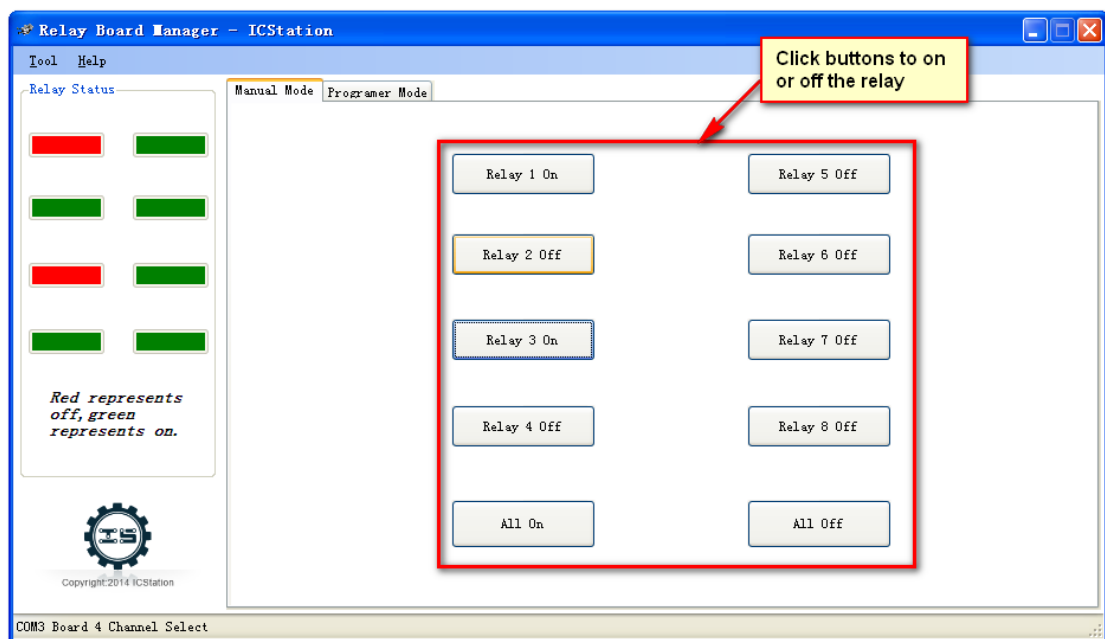
Click "Finish" to ensure the selection.



3. Click “Open The Sele” to open the board select.

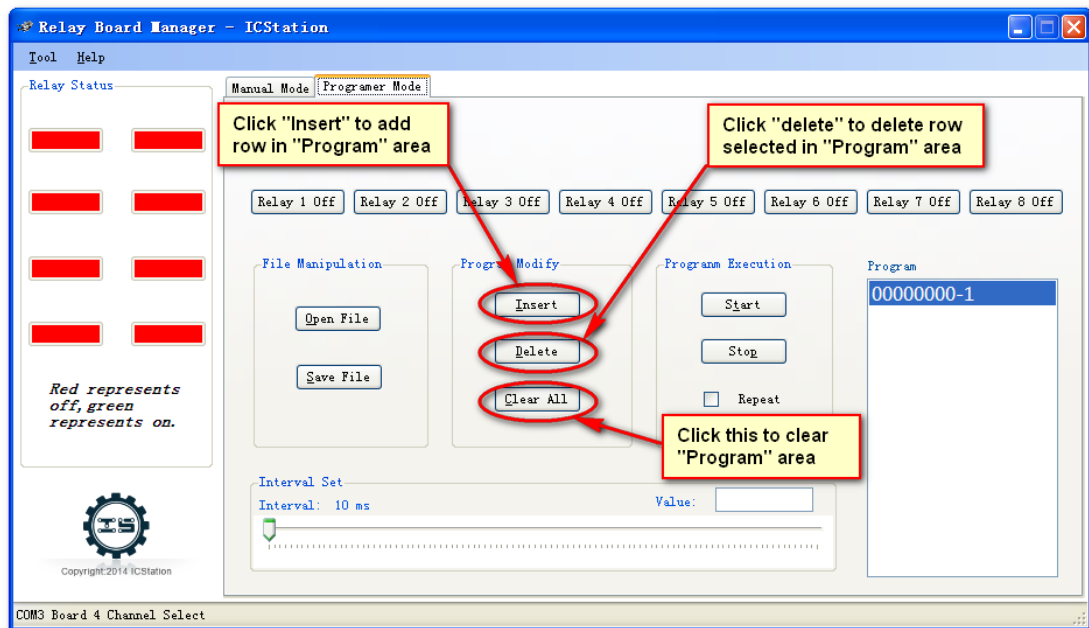


4. In tab “Manul Mode” , click button to control the relay.

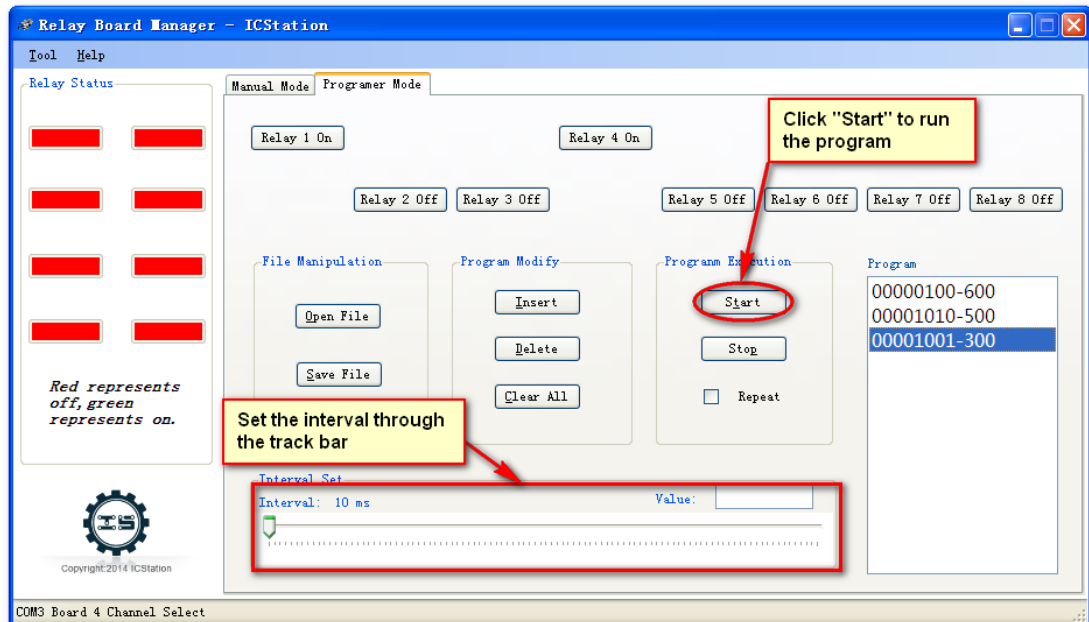




5. In tab “Programmer Mode” , you can write program as follows:

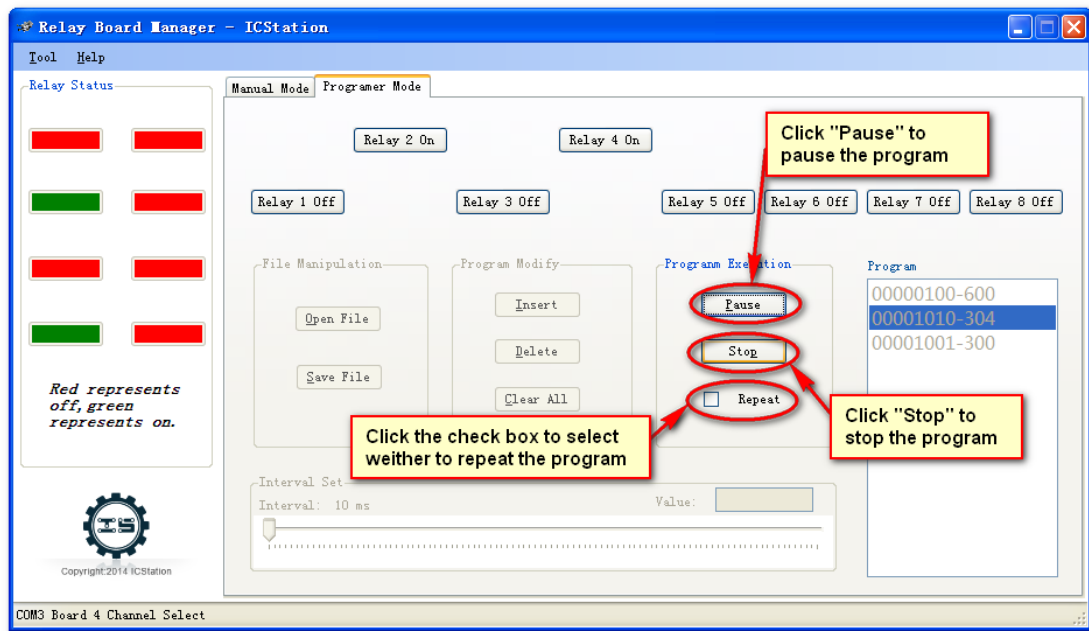


6. Click “Start” to executive the program.

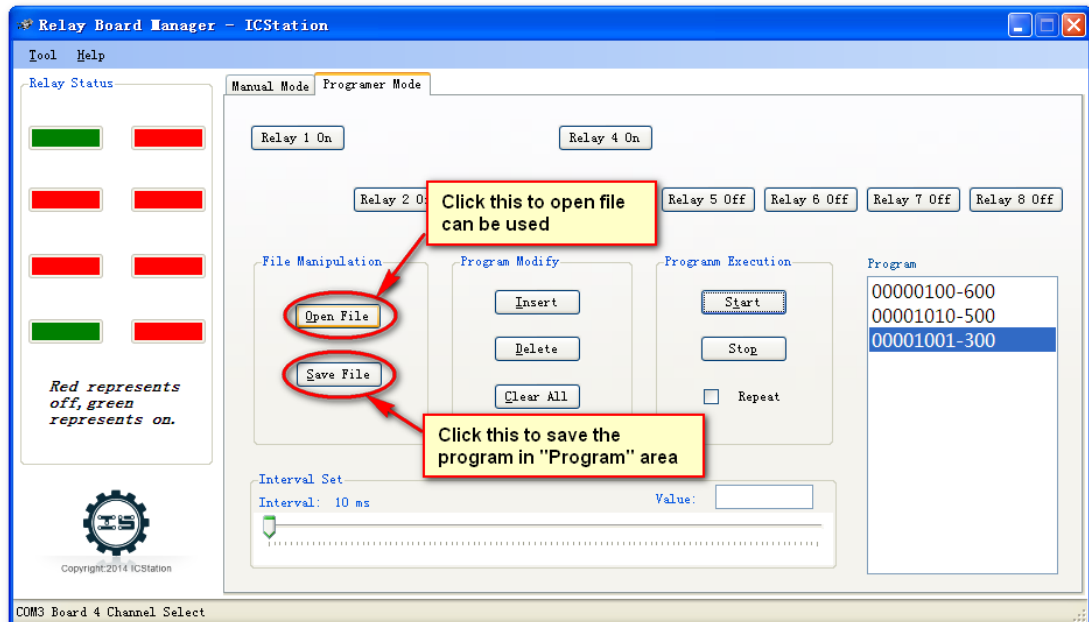




7. You can operate the module as follows:



8. The software can insert and save files as follows:





## **Thanks**

Thank you for reading . Have a nice time.